

Project ADAM Q2/Q3 2025

AED Pricing

A One Beat Medical Brand:

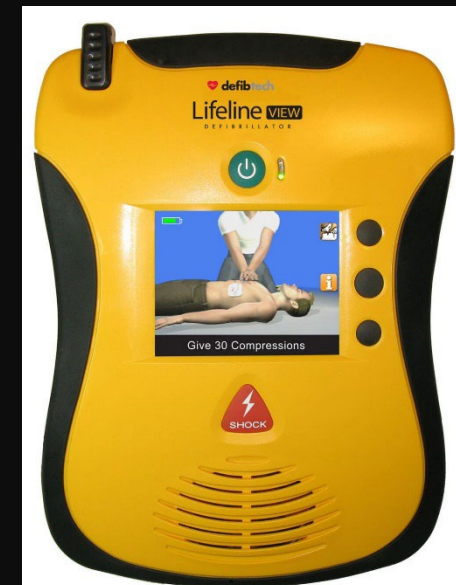


Defibtech

Lifeline Semi-automatic \$945

Lifeline Fully-automatic \$1045

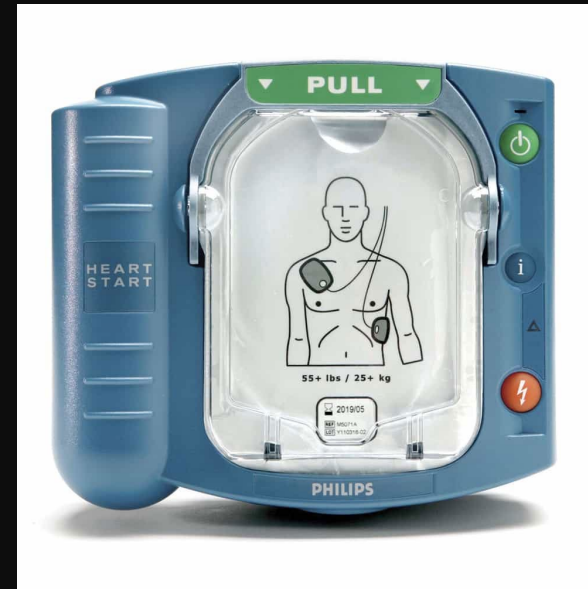
Lifeline View \$1,145



Philips

HeartStart OnSite \$1100

HeartStart FRx \$1,300



Stryker (HeartSine, Physio-Control LIFEPAK)

350P \$1100

360P \$1100

450P \$1225

CR2- starting from \$1,825 (based on one
of four configurations)

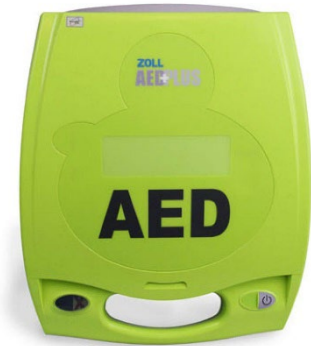


Zoll (Cardiac Science)

AED3 \$1,795

AED Plus \$1445

Powerheart G5 \$1,625



AED Program Management- ARCH!

Just like auto insurance, Arch exists to provide the support you need. When you need us, we are here for you.

Managing an AED seems simple, just pop in the battery, hang it on a wall, and you're done. Actually, there is a lot more to managing an AED to consider, including:

- Developing a post AED usage plan, which includes - downloading the data from the AED, having a physician interpret the data and compile a report that needs to be submitted to required agencies.
- Registering your AED with the required local agencies
- Conducting regular inspections to ensure the AED functions properly
- Having Medical Direction (for states that require it)
- Replacing expiring parts
- Efficiently managing multiple devices and trained CPR responders spread across multiple locations, all with different expiration dates.
- [Arch Medical Direction and Oversight | AED Superstore](#)